

SCHEDULE "FP"

THE SAPPHIRE 2
2,801sq.ft.

Elevation A B&C
/option_label_long/



UPPER MAYFIELD
ESTATES



* Optional floor plans are for reference and applicable only if selected at time of purchase. The floor plans and elevations shown are pre-construction elevations and may be revised or improved as necessitated by architectural controls and the construction process. The measurements adhere to the rules and regulations of the TARION Warranty Corporation's official method for the calculation of floor area. Materials, specifications and floor plans are subject to change without notice. All house renderings are artist's concept only. Actual usable floor space may vary from the stated floor area. All options shown are upgrades. Railings on front porch only where required by O.B.C. E. & O.E. October 2024 **3802**

Purchaser	Vendor

SCHEDULE "FP"

THE SAPPHIRE 2

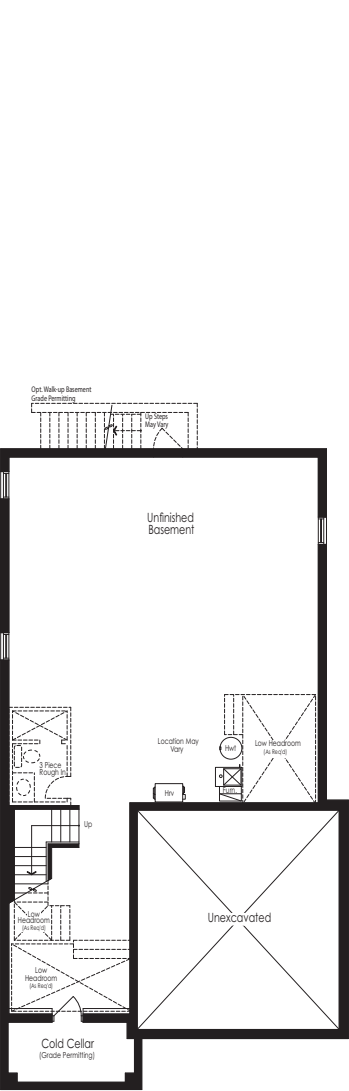
2,801sq.ft.

Elevation A B&C

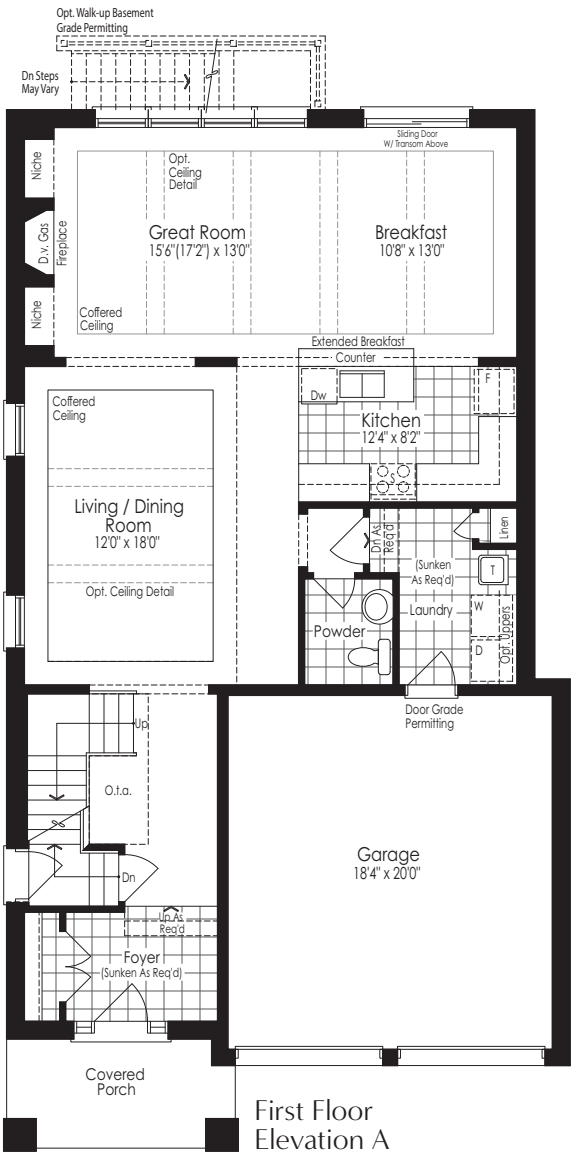
/option_label_long/



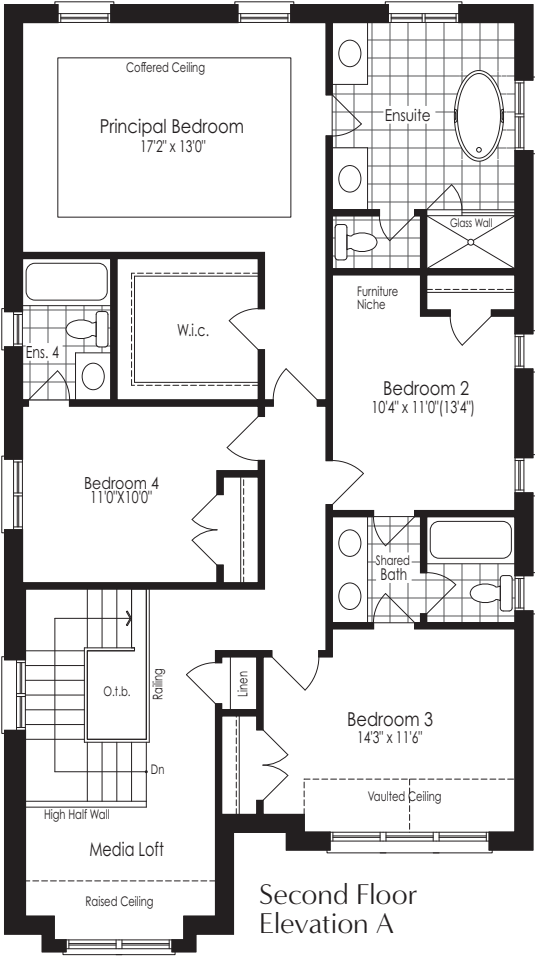
UPPER MAYFIELD
ESTATES



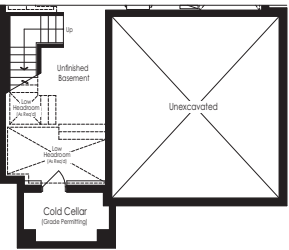
Basement
Elevation A



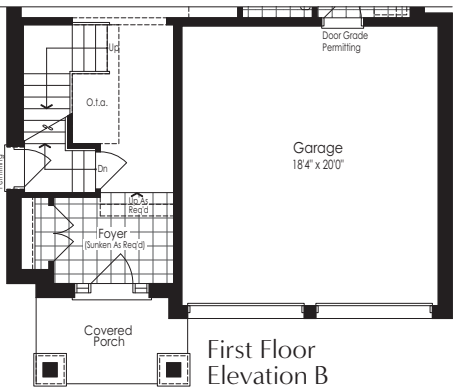
First Floor
Elevation A



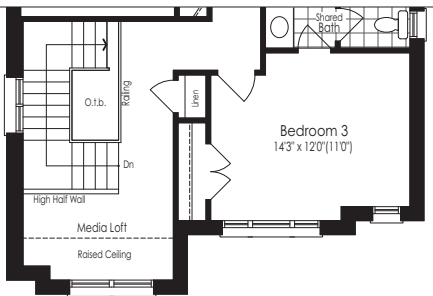
Second Floor
Elevation A



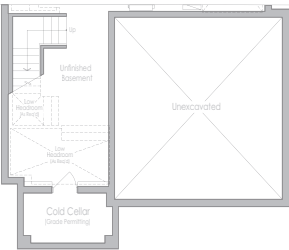
Basement
Elevation B



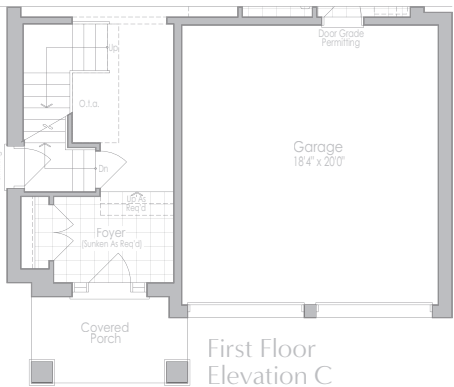
First Floor
Elevation B



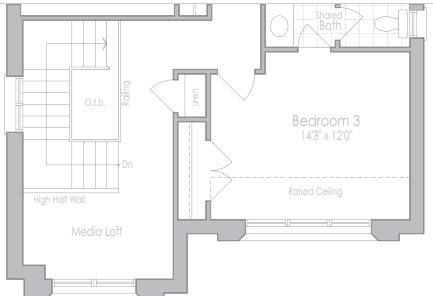
Second Floor
Elevation B



Basement
Elevation C



First Floor
Elevation C



Second Floor
Elevation C

* Optional floor plans are for reference and applicable only if selected at time of purchase. The floor plans and elevations shown are pre-construction elevations and may be revised or improved as necessitated by architectural controls and the construction process. The measurements adhere to the rules and regulations of the TARIION Warranty Corporation's official method for the calculation of floor area. Materials, specifications and floor plans are subject to change without notice. All house renderings are artist's concept only. Actual usable floor space may vary from the stated floor area. All options shown are upgrades. Railings on front porch only where required by O.B.C. E. & O.E. October 2024 3802

Purchaser	Vendor