

SCHEDULE "FP"

THE RUBY 4  
3,970 sq.ft.  
Elevation A B&C



\* Optional floor plans are for reference and applicable only if selected at time of purchase. The floor plans and elevations shown are pre-construction elevations and may be revised or improved as necessitated by architectural controls and the construction process. The measurements adhere to the rules and regulations of the TARION Warranty Corporation's official method for the calculation of floor area. Materials, specifications and floor plans are subject to change without notice. All house renderings are artist's concept only. Actual usable floor space may vary from the stated floor area. All options shown are upgrades. Railings on front porch only where required by O.B.C. E. & O.E. October 2024 **4504**

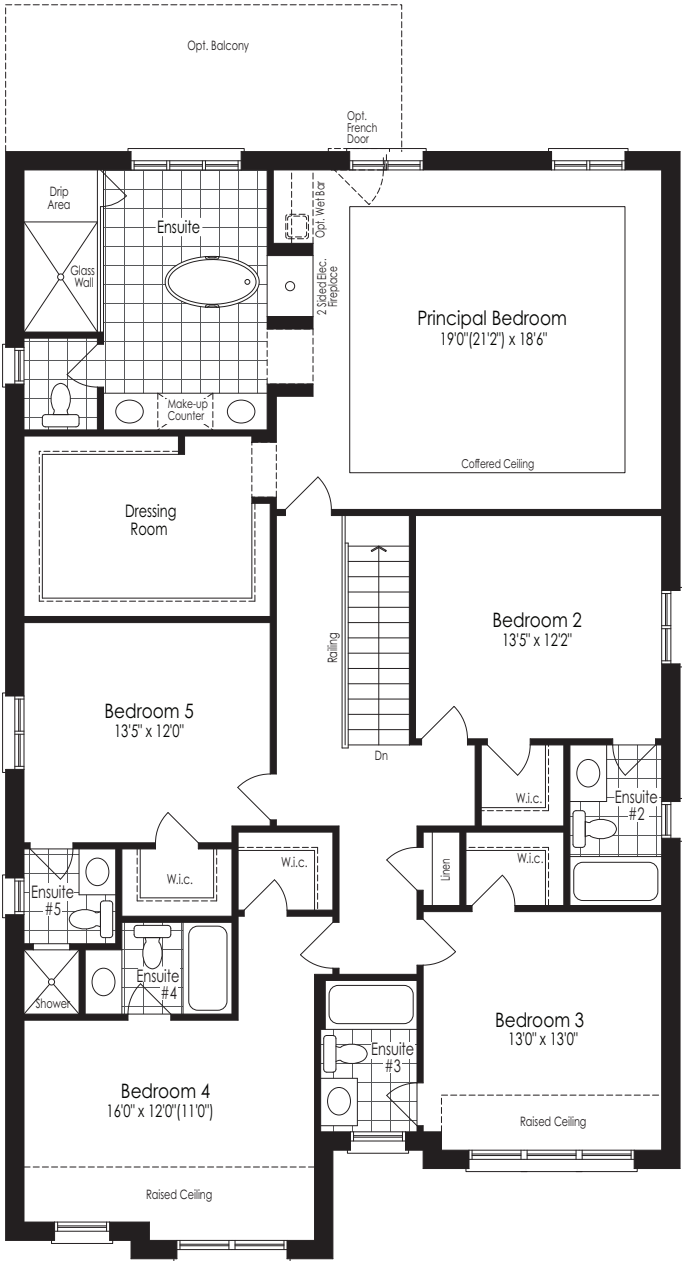
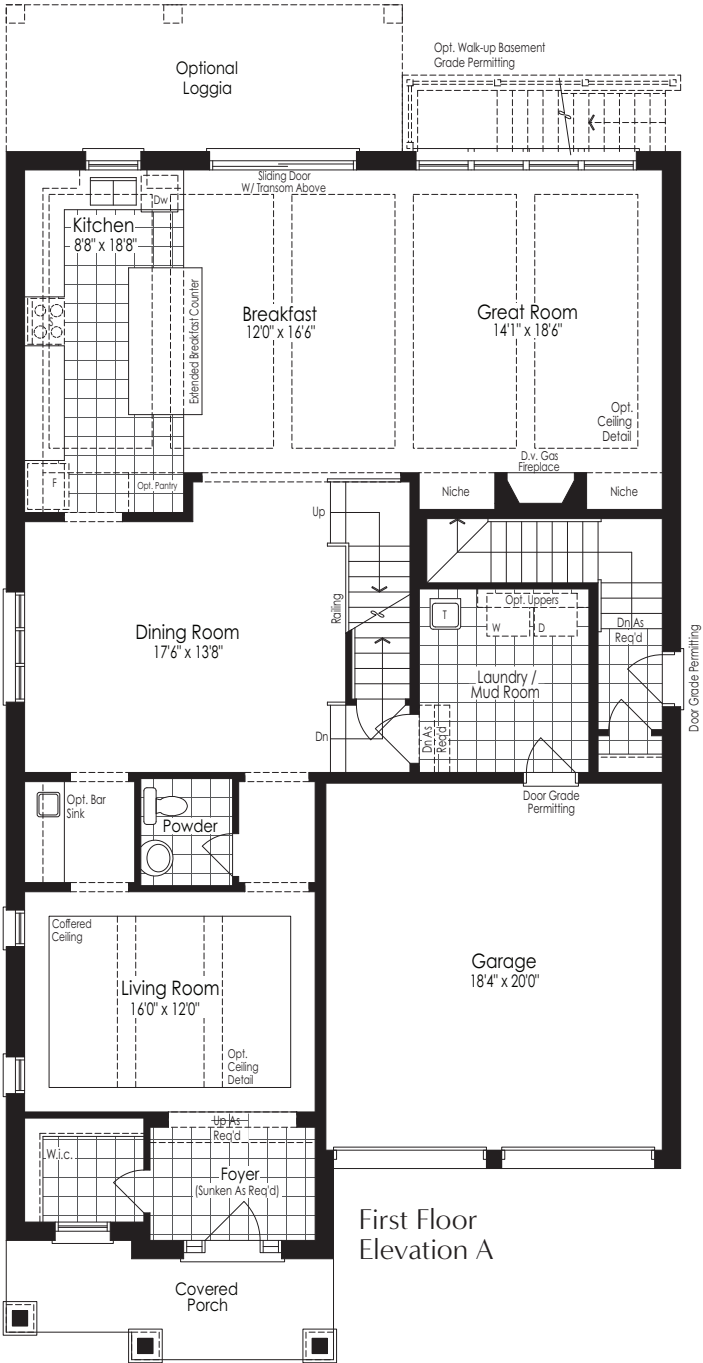
Purchaser	Vendor

SCHEDULE "FP"

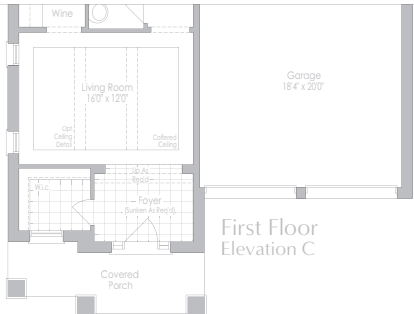
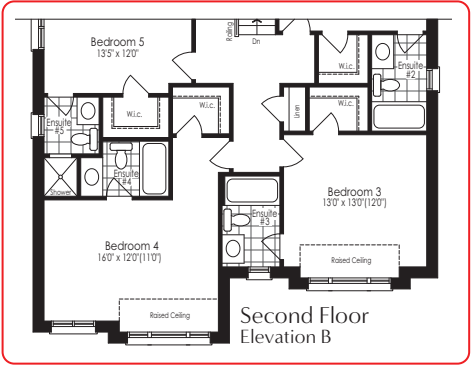
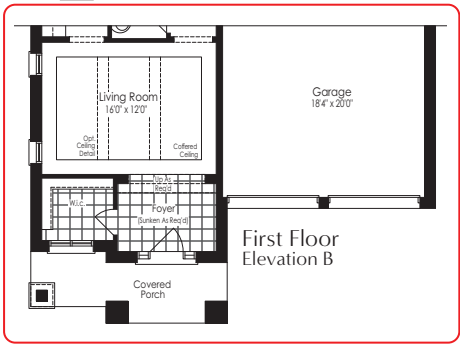
THE RUBY 4  
3,970 SQ.FT.  
Elevation A B & C



UPPER MAYFIELD  
ESTATES



Second Floor  
Elevation A



\* Optional floor plans are for reference and applicable only if selected at time of purchase. The floor plans and elevations shown are pre-construction elevations and may be revised or improved as necessitated by architectural controls and the construction process. The measurements adhere to the rules and regulations of the TARIION Warranty Corporation's official method for the calculation of floor area. Materials, specifications and floor plans are subject to change without notice. All house renderings are artist's concept only. Actual usable floor space may vary from the stated floor area. All options shown are upgrades. Railings on front porch only where required by O.B.C. E. & O.E. October 2024 4504

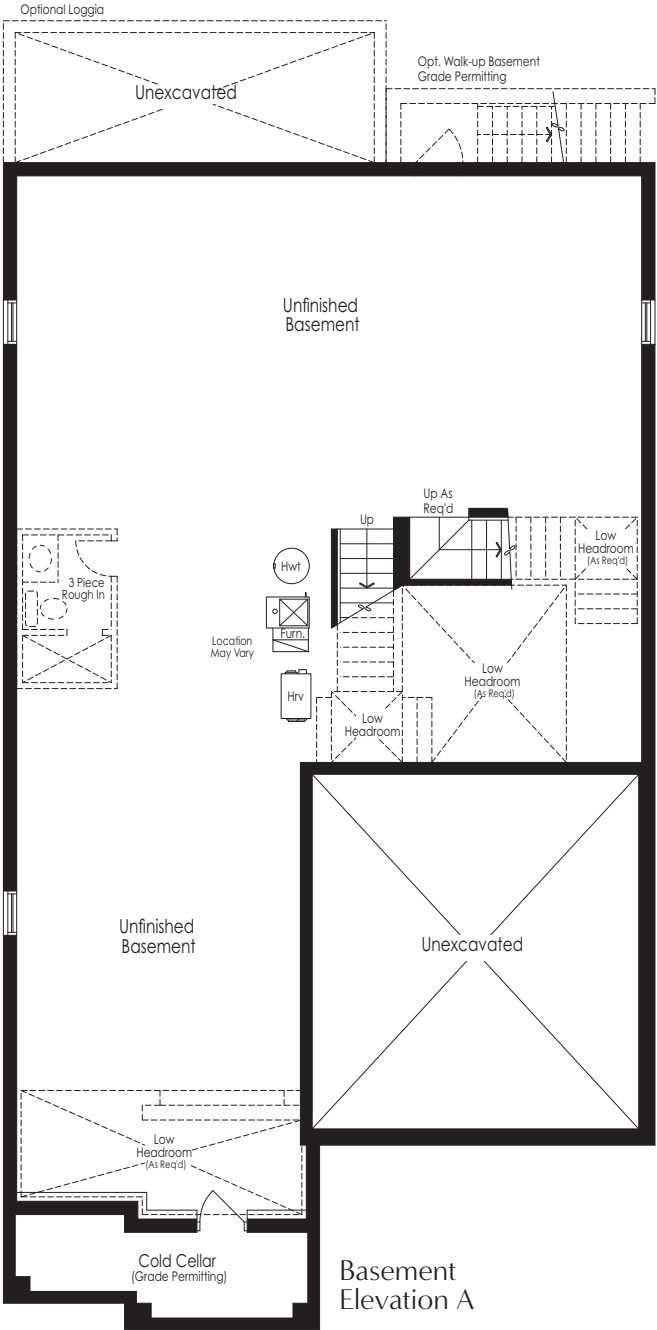
Purchaser	Vendor

SCHEDULE "FP"

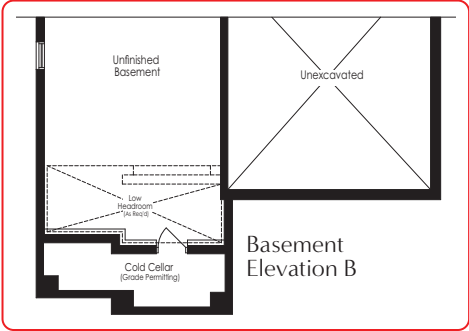
THE RUBY 4  
3,970 sq.ft.  
Elevation A B & C



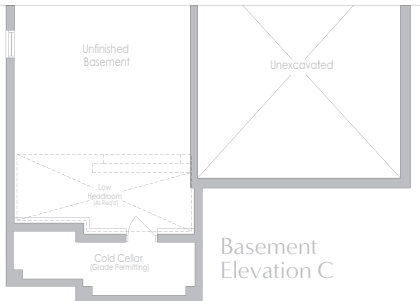
UPPER MAYFIELD  
ESTATES



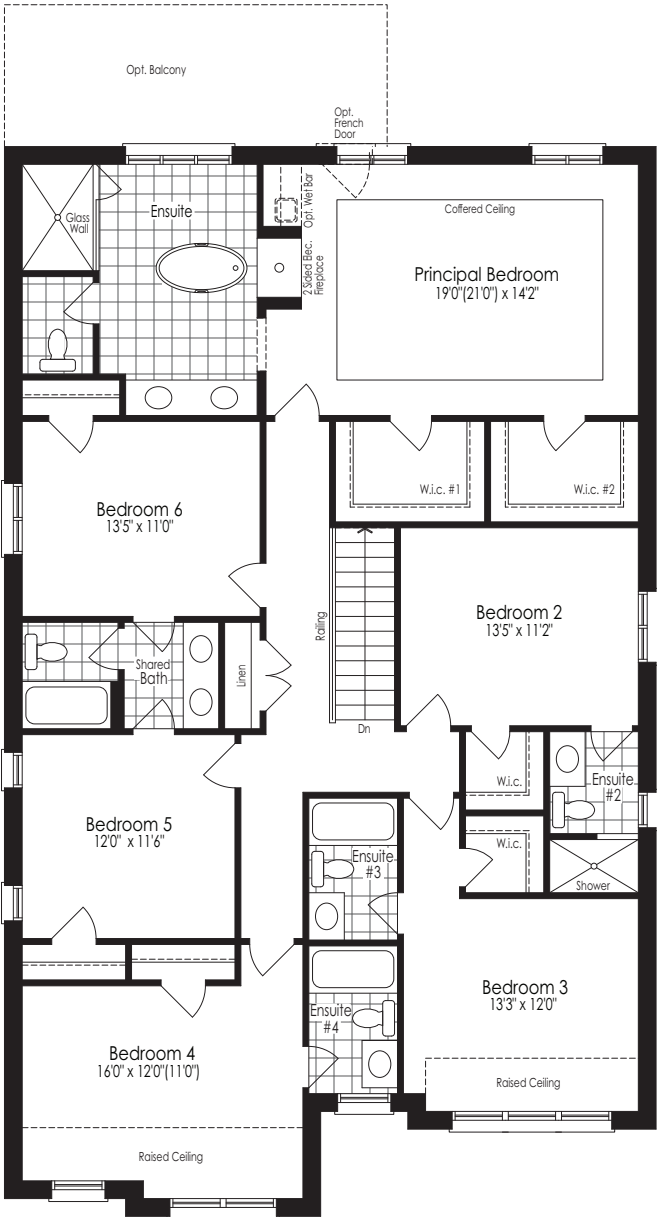
Basement  
Elevation A



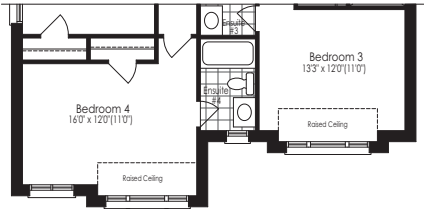
Basement  
Elevation B



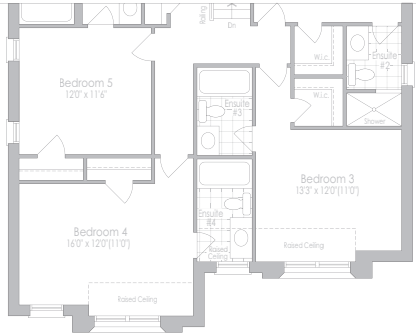
Basement  
Elevation C



Optional 6 Bedroom - Second Floor  
Elevation A



Optional 6 Bedroom - Second Floor  
Elevation B



Optional 6 Bedroom - Second Floor  
Elevation C

\* Optional floor plans are for reference and applicable only if selected at time of purchase. The floor plans and elevations shown are pre-construction elevations and may be revised or improved as necessitated by architectural controls and the construction process. The measurements adhere to the rules and regulations of the TARIION Warranty Corporation's official method for the calculation of floor area. Materials, specifications and floor plans are subject to change without notice. All house renderings are artist's concept only. Actual usable floor space may vary from the stated floor area. All options shown are upgrades. Railings on front porch only where required by O.B.C. E. & O.E. October 2024 **4504**

Purchaser	Vendor

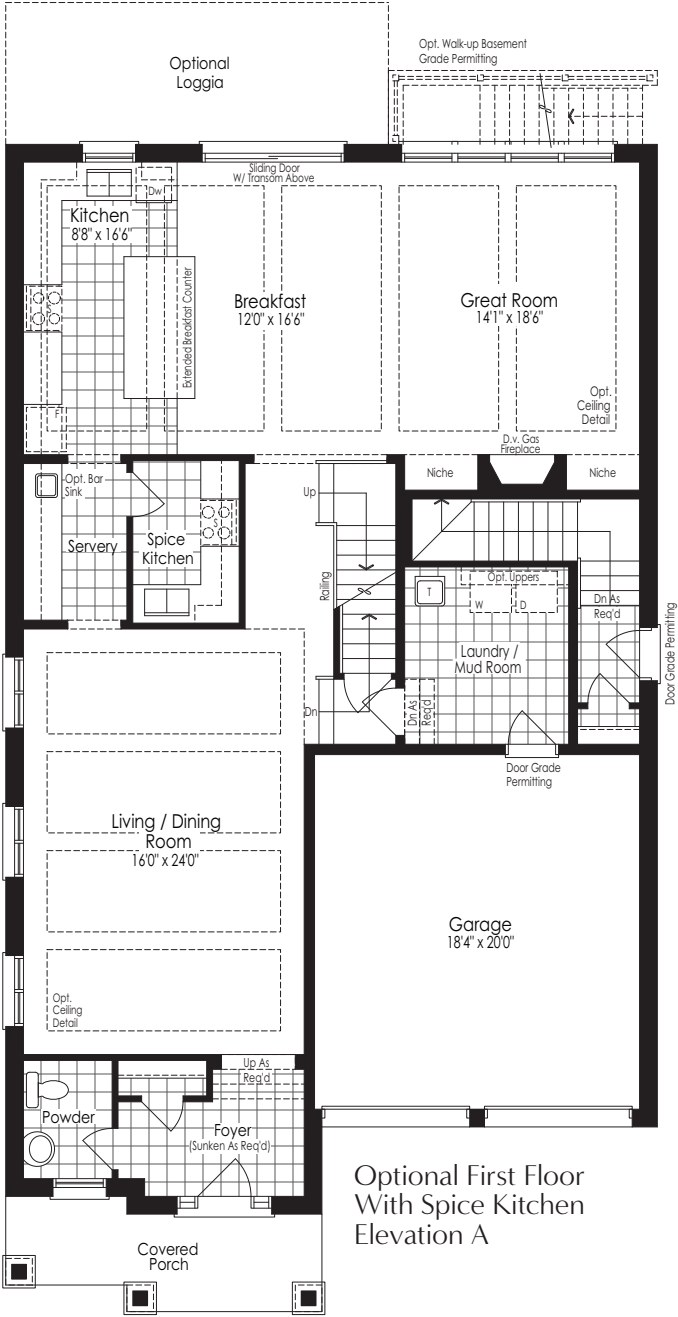


SCHEDULE "FP"

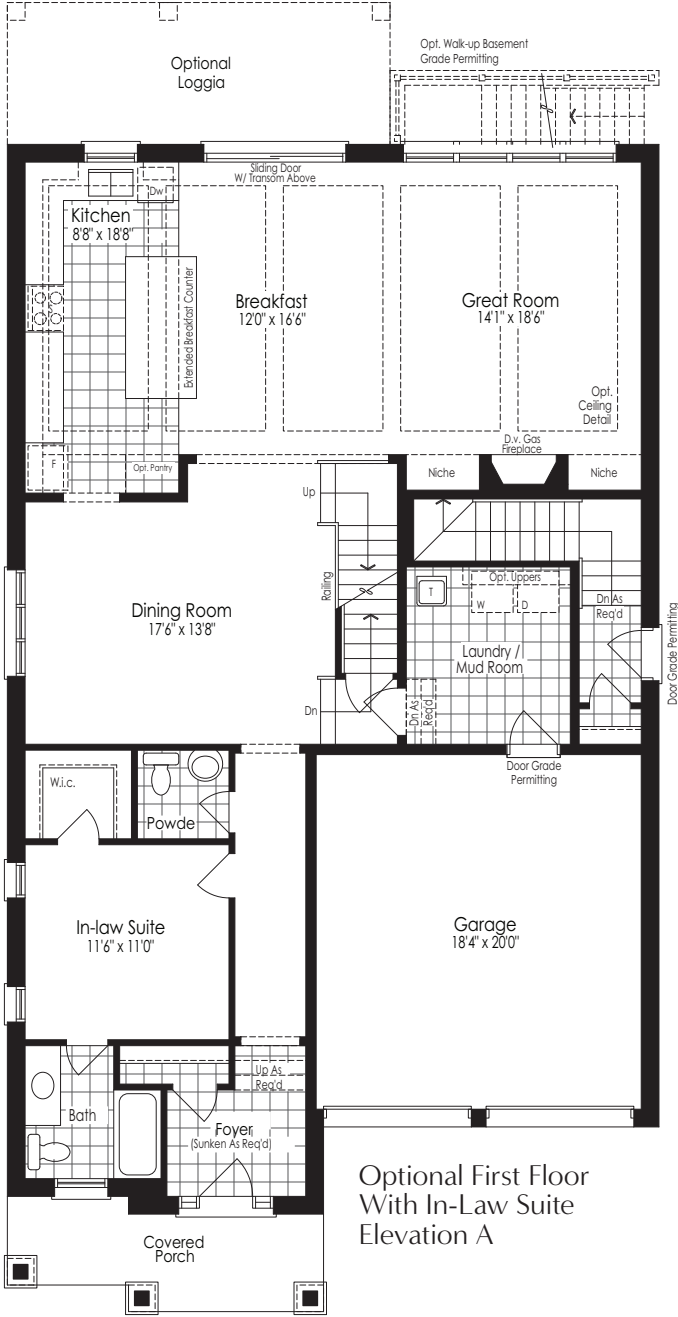
THE RUBY 4  
3,970 sq.ft.  
Elevation A B & C



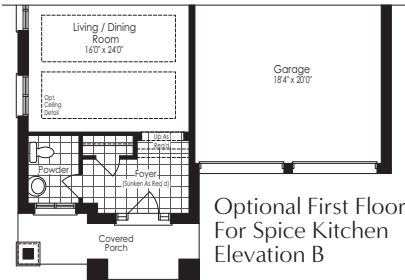
UPPER MAYFIELD  
ESTATES



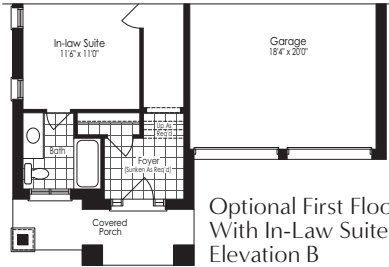
Optional First Floor  
With Spice Kitchen  
Elevation A



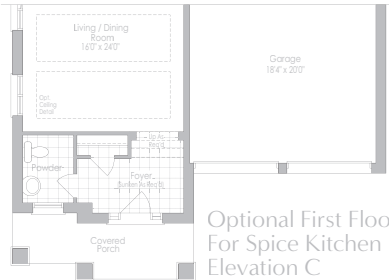
Optional First Floor  
With In-Law Suite  
Elevation A



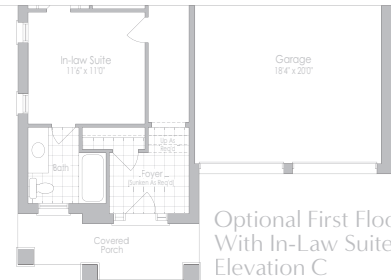
Optional First Floor  
For Spice Kitchen  
Elevation B



Optional First Floor  
With In-Law Suite  
Elevation B



Optional First Floor  
For Spice Kitchen  
Elevation C



Optional First Floor  
With In-Law Suite  
Elevation C

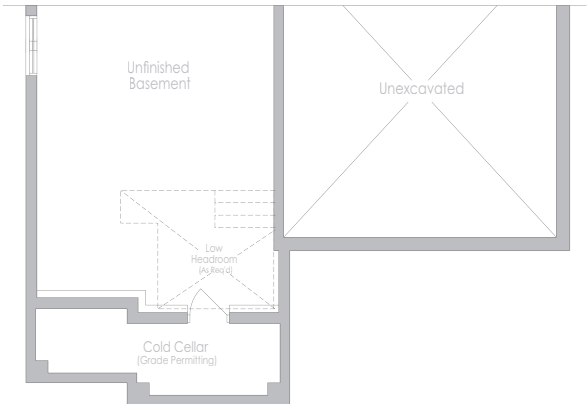


\* Optional floor plans are for reference and applicable only if selected at time of purchase. The floor plans and elevations shown are pre-construction elevations and may be revised or improved as necessitated by architectural controls and the construction process. The measurements adhere to the rules and regulations of the TARIION Warranty Corporation's official method for the calculation of floor area. Materials, specifications and floor plans are subject to change without notice. All house renderings are artist's concept only. Actual usable floor space may vary from the stated floor area. All options shown are upgrades. Railings on front porch only where required by O.B.C. E. & O.E. October 2024 **4504**

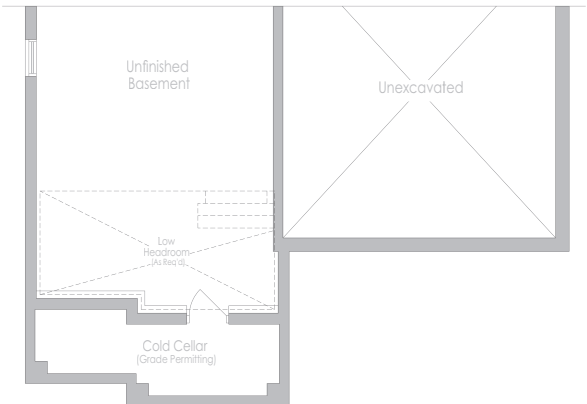
Purchaser	Vendor
-----------	--------

SCHEDULE "FP"

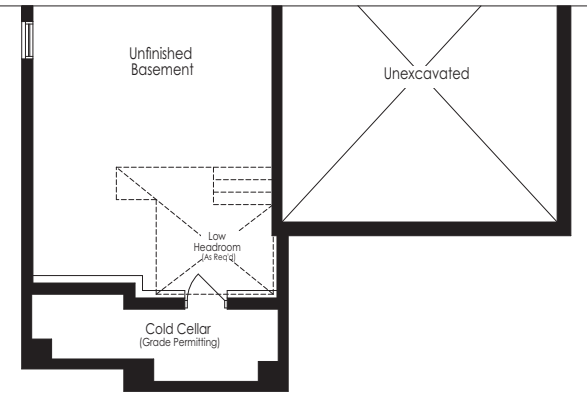
THE RUBY 4  
3,970 sq.ft.  
Elevation A B & C



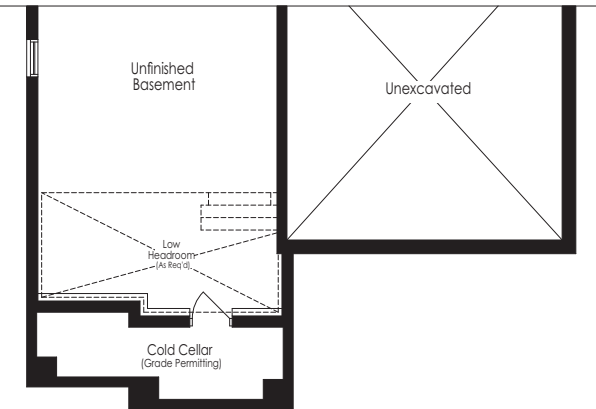
Optional Basement  
For In-Law Suite  
Elevation A



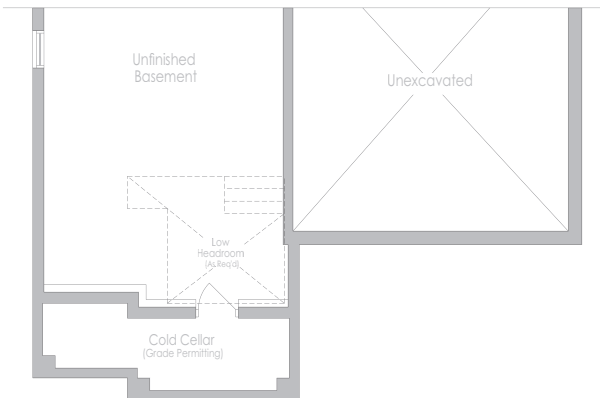
Optional Basement  
For Spice Kitchen  
Elevation A



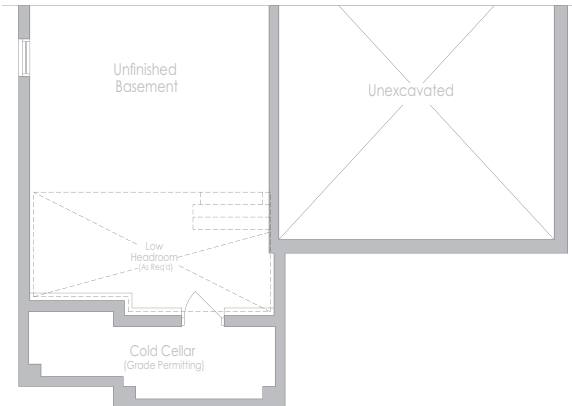
Optional Basement  
For In-Law Suite  
Elevation B



Optional Basement  
For Spice Kitchen  
Elevation B



Optional Basement  
For In-Law Suite  
Elevation C



Optional Basement  
For Spice Kitchen  
Elevation C



\* Optional floor plans are for reference and applicable only if selected at time of purchase. The floor plans and elevations shown are pre-construction elevations and may be revised or improved as necessitated by architectural controls and the construction process. The measurements adhere to the rules and regulations of the TARION Warranty Corporation's official method for the calculation of floor area. Materials, specifications and floor plans are subject to change without notice. All house renderings are artist's concept only. Actual usable floor space may vary from the stated floor area. All options shown are upgrades. Railings on front porch only where required by O.B.C. E. & O.E. October 2024 **4504**

Purchaser	Vendor