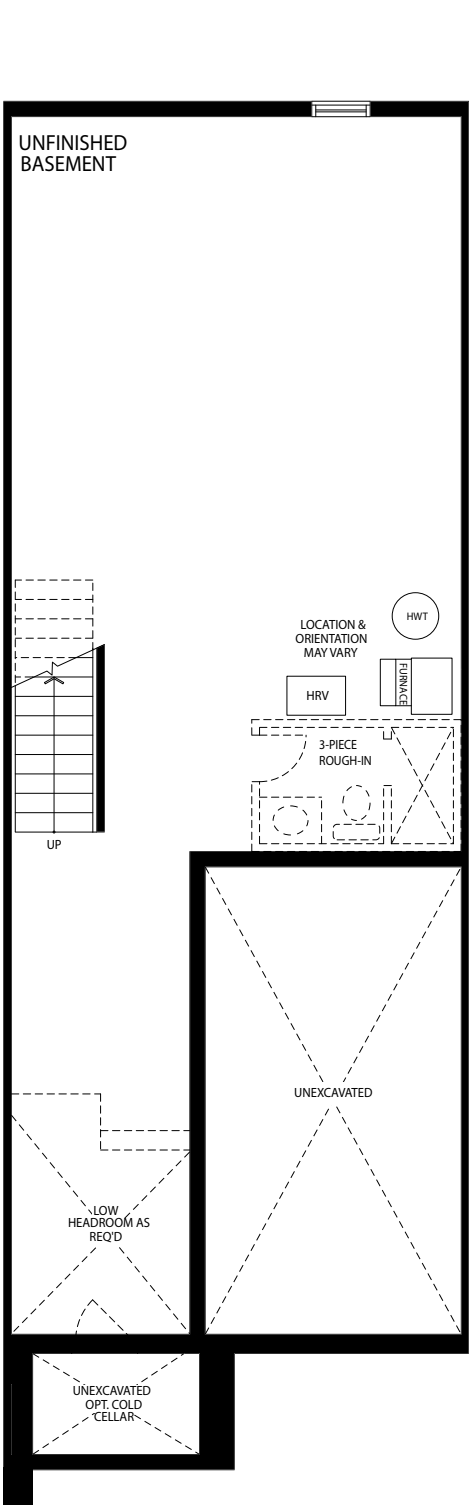
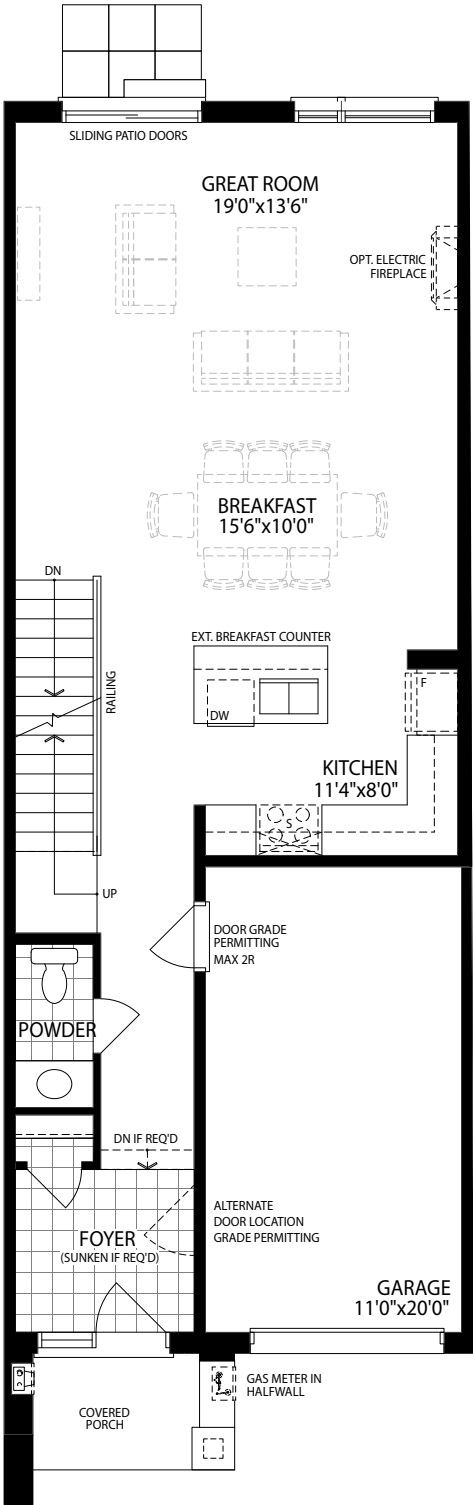


# The Fraser (Interior Units)

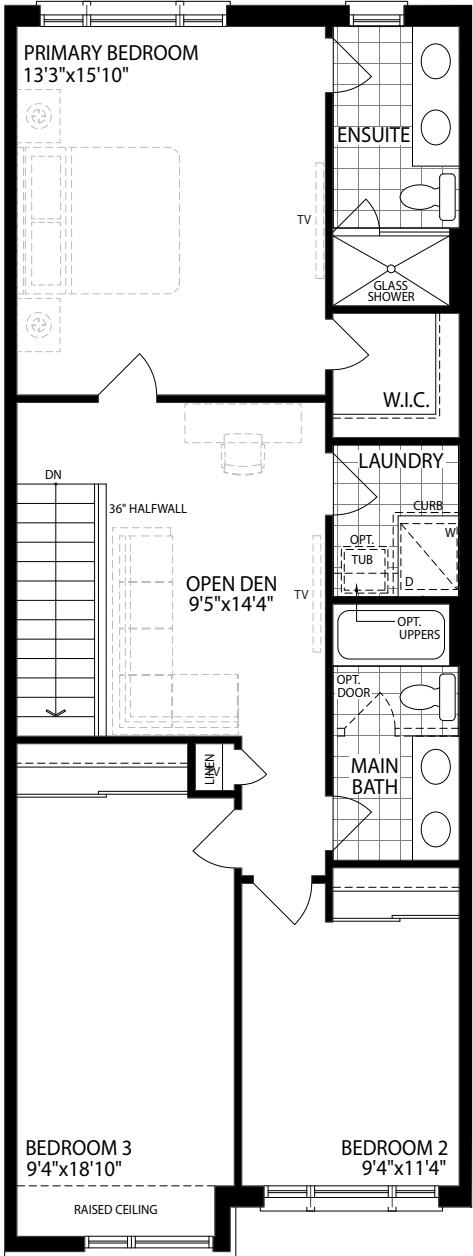
Elevation A • 1885 sq.ft.



Basement Elevation A



Ground Floor Elevation A



Second Floor Elevation A

Purchaser(s)	Vendor

The floor plans and elevations shown are pre-construction plans and may be revised or improved as necessitated by architectural controls and the construction process. The measurements adhere to the rules and regulations of the TARION Warranty Corporation's official method for the calculation of floor area. Actual usable floor space may vary from the stated floor area. Locations of furnace, hot water tank, posts and beams may vary and are to be determined by architect and purchasers shall be deemed to accept the same. E. & O.E. June 2022 2001

# The Fraser (Interior Units)

Elevation A • 1885 sq.ft.



Elevation A

Purchaser(s)	Vendor

The floor plans and elevations shown are pre-construction plans and may be revised or improved as necessitated by architectural controls and the construction process. The measurements adhere to the rules and regulations of the TARION Warranty Corporation's official method for the calculation of floor area. Actual usable floor space may vary from the stated floor area. Locations of furnace, hot water tank, posts and beams may vary and are to be determined by architect and purchasers shall be deemed to accept the same. E. & O.E. June 2022 2001